

# TransWest Express and Gateway South

---

**Co-developed by four leading entities:**

**Arizona Public Service**

**PacifiCorp**

**National Grid**

**Wyoming Infrastructure Authority**

Regional Stakeholder Meeting

October 17, 2007

Salt Lake City, Utah



**nationalgrid**



# Standards of Conduct Non-Disclosure Statement

---

**The following procedures have been implemented to provide Standards of Conduct Safeguards:**

- ◆ Ten day advance notice of public meeting
- ◆ All eligible customers invited
- ◆ Telephone participation provided
- ◆ Handouts posted on OASIS prior to meeting
- ◆ Meeting notes will be taken and posted
- ◆ One eligible customer must be in attendance
- ◆ Meetings no more than twice per month

# Our agenda for today...

---

1. **Welcome** – Bob Smith
  2. **Co-Development Partnership** – David Smith
    - a. Overview of Partners
    - b. Business Arrangements
    - c. Benefits of Collaborating
  3. **Overview of Projects**
    - a. TransWest Express – Peter Krzykos
    - b. Gateway South – Craig Quist
    - c. Potential Co-Development Solutions – David Smith
- Lunch Break**
4. **Stakeholder Forum**

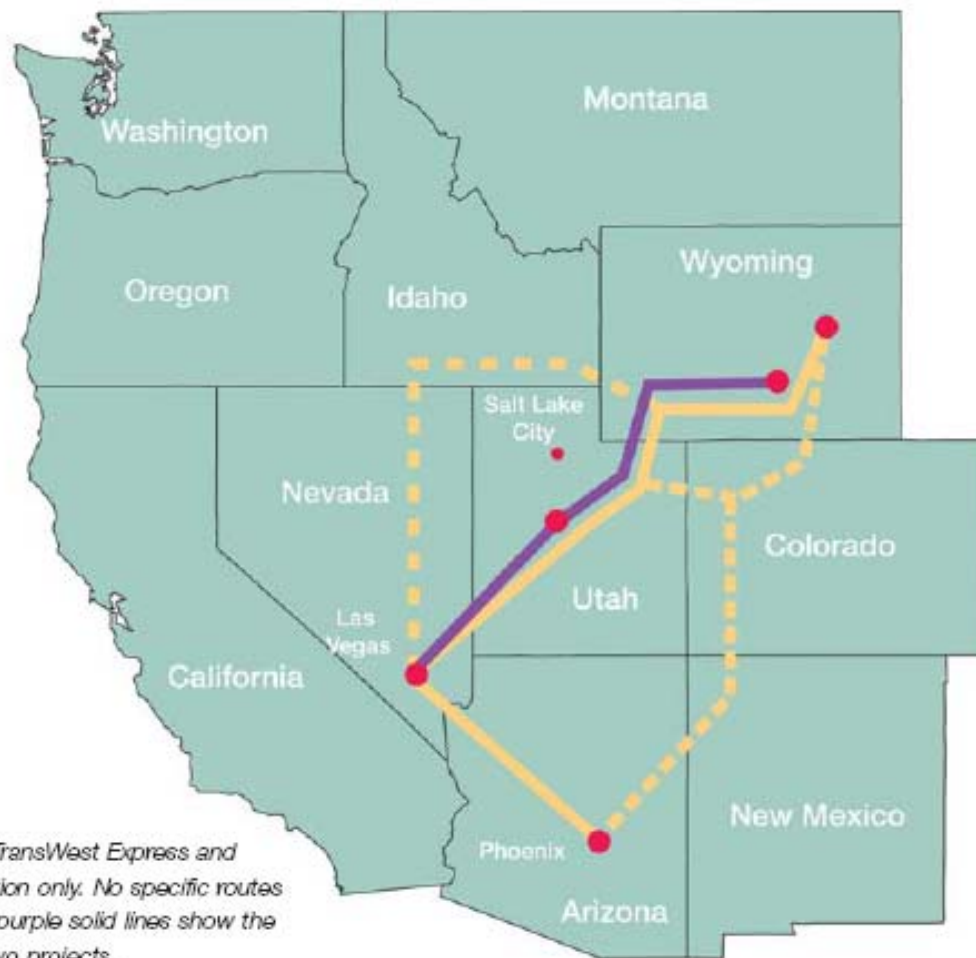
# Welcome and Introductions

***APS, PacifiCorp, National Grid, and the WIA in accordance with the WECC Regional Planning Review Process, the NTTG and SWAT planning processes, and FERC Order 890, request stakeholder feedback on the TransWest Express and Gateway South projects***

**Projects**

Gateway South	
TransWest Express	

*The map shows general routes for the TransWest Express and Gateway South projects. It is for illustration only. No specific routes have been determined. The yellow and purple solid lines show the potential common areas between the two projects.*



# About Arizona Public Service



## Regions Served

- ◆ 11 of 15 counties within Arizona
- ◆ Fastest growing state at 3.5%
- ◆ 3 times the U.S. average

## APS

- ◆ Largest electric utility in Arizona
- ◆ Growth 4 times the U.S. average
- ◆ More than 1 million customers
- ◆ 6,600+ employees
- ◆ \$1B 10-year Transmission Plan



■ APS Retail Service Territory

# About PacifiCorp

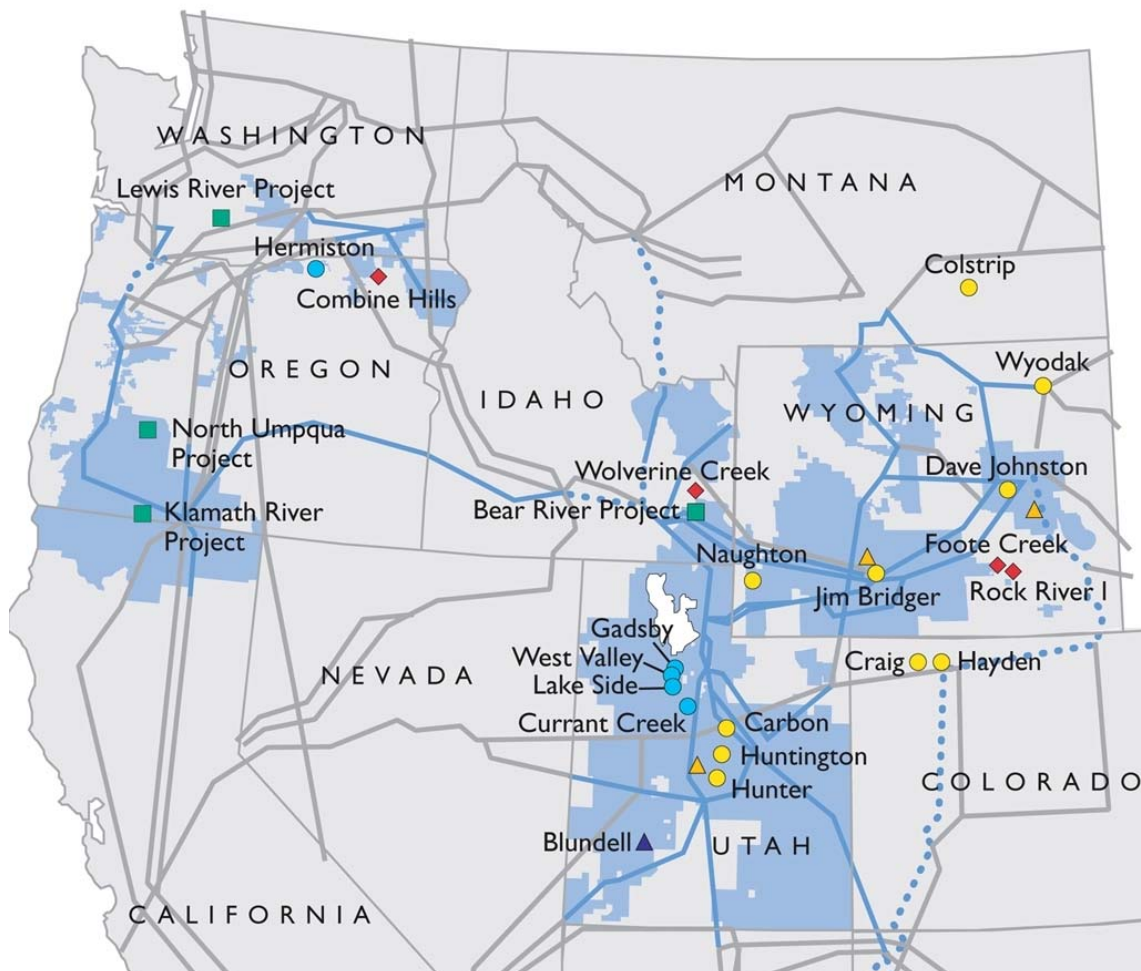


## Regions Served

- ◆ Oregon, Washington and California (Pacific Power)
- ◆ Utah, Wyoming and Idaho (Rocky Mountain Power)

## PacifiCorp

- ◆ 15,000 miles transmission
- ◆ 1.7 million customers
- ◆ 6,600+ employees
- ◆ 9,062 MW of generation



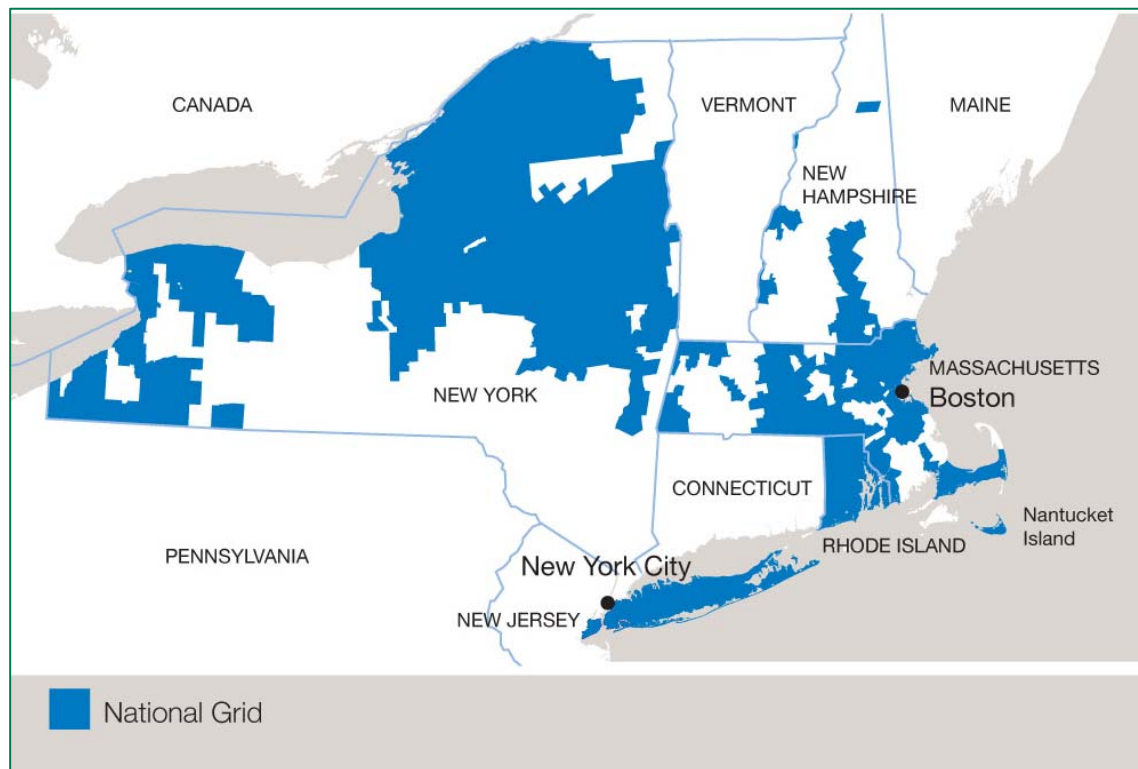
# About National Grid

## Regions Served

- ◆ Northeast US
- ◆ All of UK

## National Grid

- ◆ Transmission Operator and System Operator in U.K.
- ◆ > 4 million electric customers in US
- ◆ > 20,000 employees
- ◆ > 2,000 electric transmission staff
- ◆ Capital investment of ~\$4.5B per year

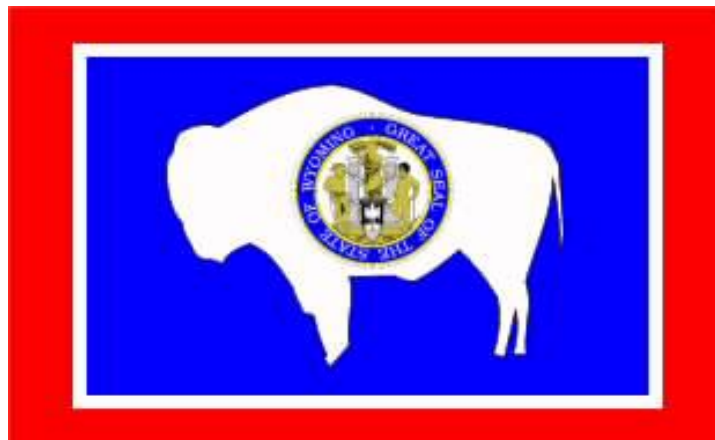


# About Wyoming



## Wyoming

- ◆ Largest energy exporting state in US
  - ◆ Largest producer of coal
  - ◆ Largest producer of uranium
  - ◆ Second largest producer of natural gas
- ◆ Estimated 3.4GW of > Class 6 wind and over 14GW of developable wind
- ◆ Governor Freudenthal chair of the Western Governors Association



## Wyoming Infrastructure Authority

- ◆ Formed in 2004
- ◆ Mission to diversify and expand the state's economy through improvements in electric transmission infrastructure
- ◆ Authority to issue bonds to finance transmission facilities

# Co-Development Agreement

---

## Purpose

- ♦ Take initial development steps
- ♦ Allows time to canvas load serving entities and stakeholders
- ♦ Provides time to define the two projects
- ♦ Provides time to structure more complex, longer term agreements
- ♦ Allows opportunity to develop regulatory plan

## Agreement

- ♦ Executed August 2007
- ♦ \$3m budget; costs shared by APS, National Grid, PacifiCorp & WIA
- ♦ Longer term business agreements targeted for 2008

## National Grid

- ♦ Lead developer of both projects
- ♦ Cost based billing (as if the partners were a regulated subsidiary)
- ♦ Compensated by partners facilitating an equity position across both projects

# What is Co-Development?

---

## **Activities undertaken jointly**

- ◆ Common project team implementation strategy and deployment
- ◆ Coordinated understanding of the needs of customers
- ◆ Coordinate permitting and stakeholder outreach
- ◆ More efficient regional planning and rating review processes

## **Each project to maintain a degree of independence**

## **Activities undertaken separately**

- ◆ ROW filings - purpose and need case, approvals
- ◆ WECC Rating Process
- ◆ Regulatory filings, approvals

# Meeting Regional Needs

---

- ♦ **Consistent with WGA, RMATS, and CDEAC recommendations for transmission expansion**
- ♦ **Improve overall electric reliability for the West**
  - ♦ Reinforces east side of Western Interconnection
  - ♦ Adds import capability into the Desert Southwest
  - ♦ Wasatch Front reinforced from North and South
  - ♦ AC and DC combination
- ♦ **Provides increased access for 3<sup>rd</sup> party transmission users**
- ♦ **Improves regional resource diversity, reliability and economics**
  - ♦ Access to renewables (primarily wind)
  - ♦ Enhance wholesale market vitality

# Benefits of Co-Development

---

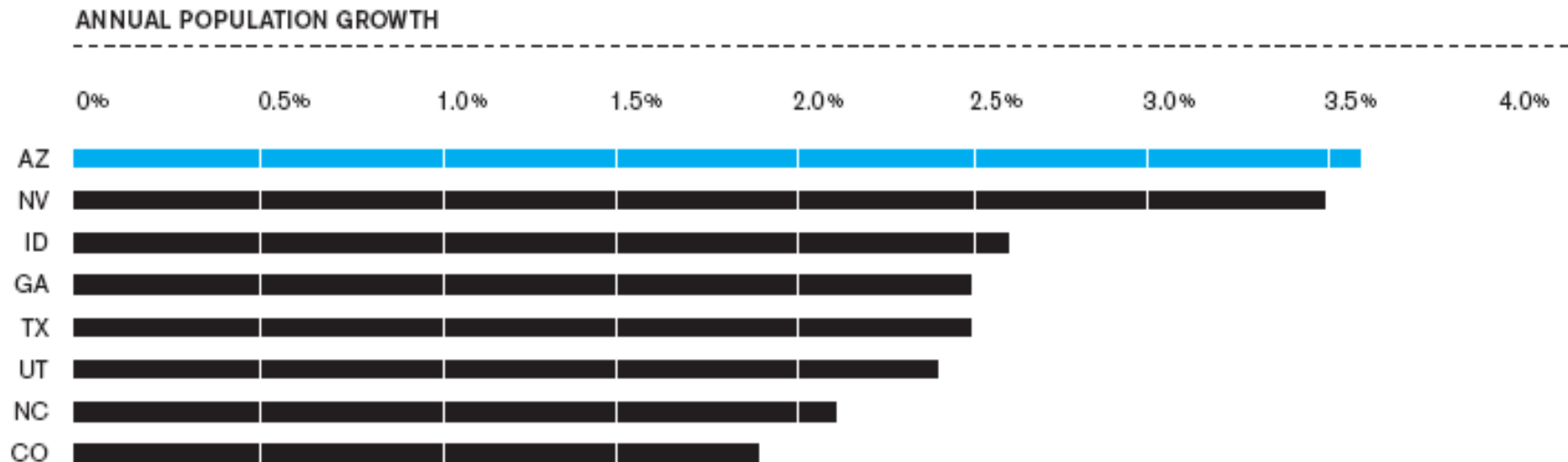
- ◆ **Meet regional needs**
- ◆ **Better use of transmission corridors**
- ◆ **Opportunities to coordinate permitting**
- ◆ **Economies of scale and cost savings in the development and construction activities**

# TransWest Express Need for the Project

## APS Customers and Demand Continue to Grow

*ARIZONA IS THE FASTEST GROWING STATE IN THE COUNTRY.*

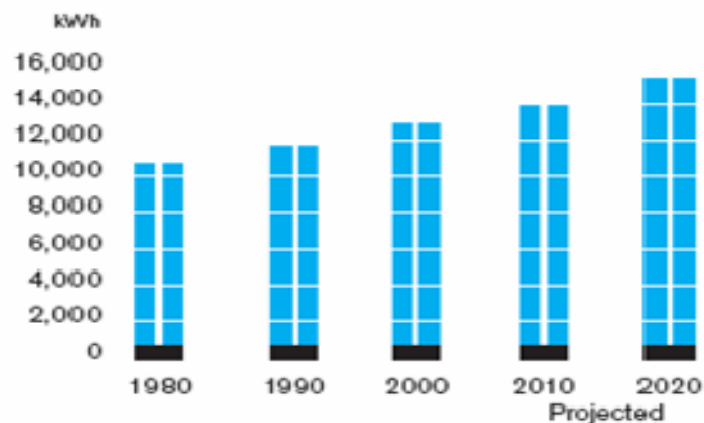
*Source: Population Division, U.S. Census Bureau*



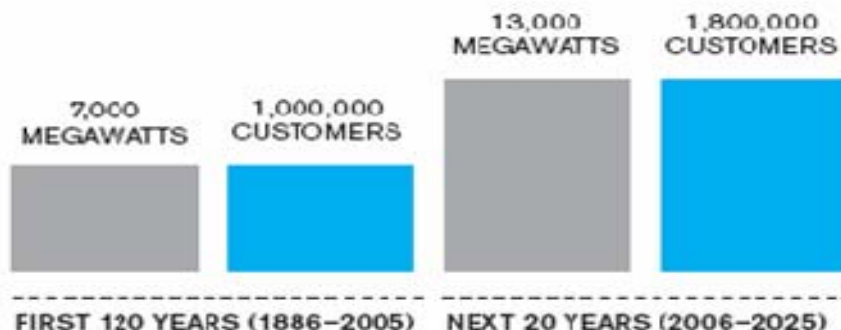
# Transwest Express – Need for the Project

- ◆ APS' summer resource capacity requirement expected to increase 8000MW by 2025
- ◆ APS' annual energy sales expected to increase by 70% by 2025
- ◆ Other Arizona utilities are growing at comparable rates
- ◆ Arizona RPS requires 15% of retail energy sales from renewable resources by 2025
- ◆ TransWest Express is viewed as a viable alternative to local resource development

*APS CUSTOMERS ARE USING MORE ELECTRICITY EACH YEAR.*



*BY 2025, APS WILL BE NEARLY TWICE THE ELECTRIC COMPANY WE ARE TODAY.*



# TransWest Express

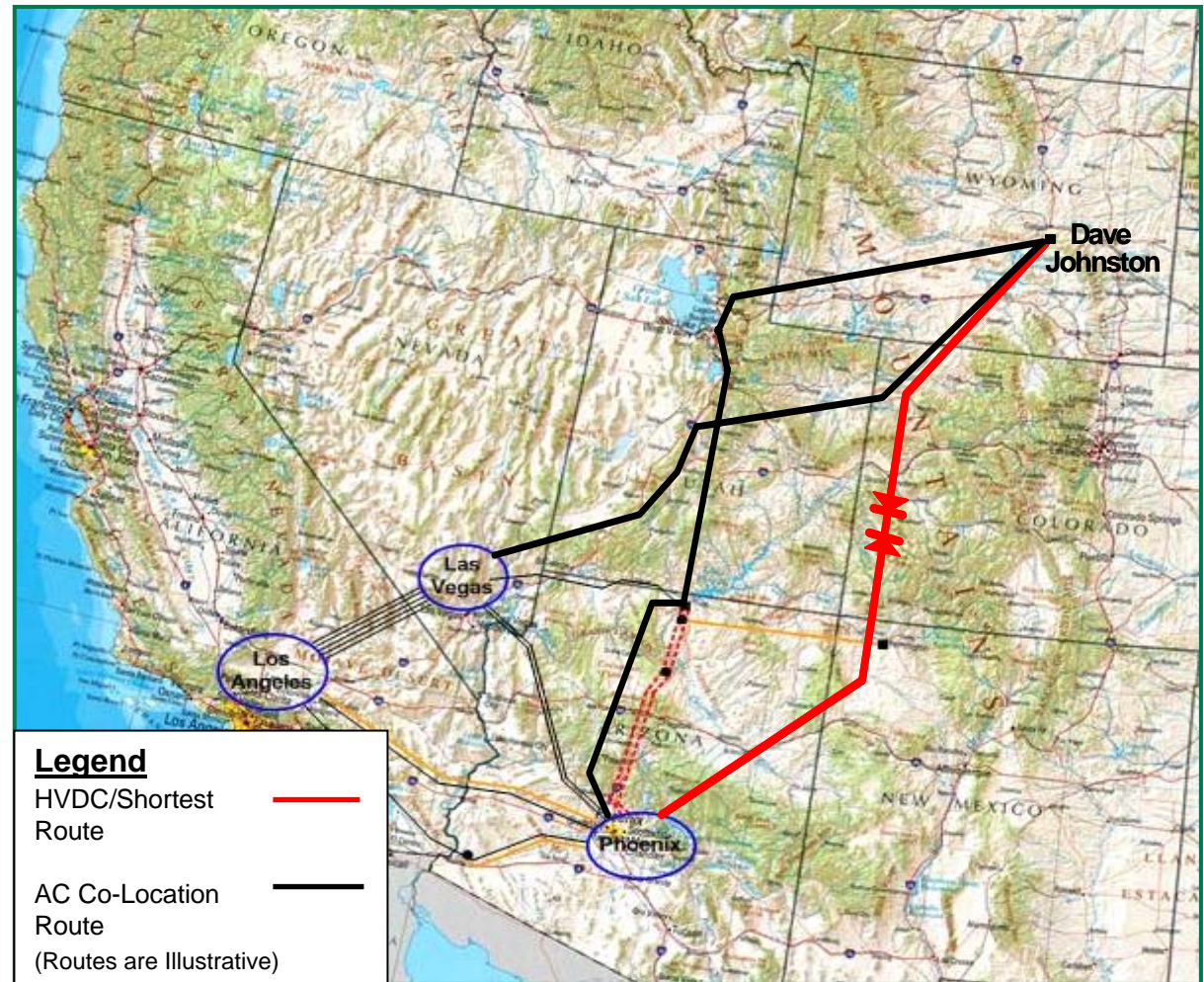
## Stakeholder Input

---

- ♦ **Open stakeholder process**
  - ♦ November 2005 kick-off meeting - Phoenix
  - ♦ March 2006 project update meeting – Salt Lake City
  - ♦ June 2006 project update meeting - Jackson
  
- ♦ **Periodic project updates**
  - ♦ Sub-regional Planning Groups
  - ♦ SSG-WI
  - ♦ WECC
  
- ♦ **Completed Feasibility Study in December 2006**

# TransWest Express Feasibility Study Summary

- ♦ **Analyzed:**
  - 5 route options
  - 500 & 765 kV AC
  - 500 kV DC
- ♦ **Economic analysis supports DC or AC/DC hybrid alternatives**
- ♦ **Cost \$2.3B – \$3.2B**
- ♦ **Multiple permitting opportunities identified**



# TransWest Express Reference Case

- ◆ 3,000 MW
- ◆ 500kV bi-pole HVDC
- ◆ 2015 in-service date
- ◆ Route to preserve option of Las Vegas area terminal



# **TransWest Express**

## **Parties Expressing Interest**

---

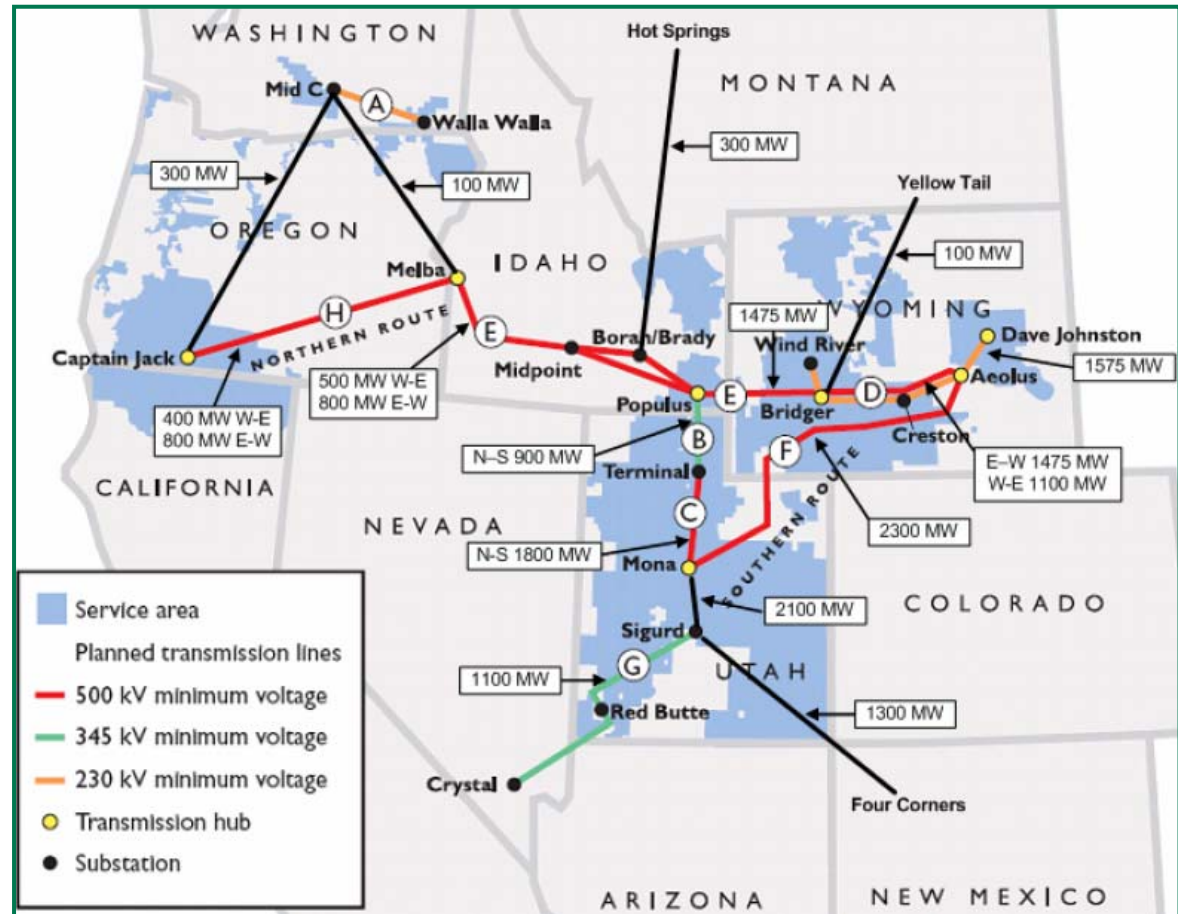
- ♦ **Salt River Project, Tucson Electric Power and Southern California Edison expressed interest in participation**
- ♦ **National Grid, as Development Manager, and WIA joined Project Team**
- ♦ **PacifiCorp expressed interest in exploring co-development of TWE and Gateway South**
- ♦ **All parties remain interested in participation and support the work being conducted under the Co-Development Agreement**

# Gateway South Need for the Project

- Wasatch Front annual peak load to increase 2500MW by 2022
- Southern Utah annual peak load to increase by 500MW by 2022\*
- PacifiCorp IRP targets 8.5% renewables by 2016
- Over 5000MW in point to point Transmission Service Requests

\*including Transmission Network Service customers

## Third Party Point to Point Requests on PacifiCorp System



# Gateway South Stakeholder Input

---

- ◆ **PacifiCorp Integrated Resource Plan**
  - ◆ Eight public meetings between December 2005 and April 2007 held in Salt Lake City, Cheyenne, and Portland
- ◆ **Northern Tier Transmission Group**
  - ◆ Three stakeholder meetings since May 2007 and ongoing to develop NTTG Sub-Regional Transmission Plan

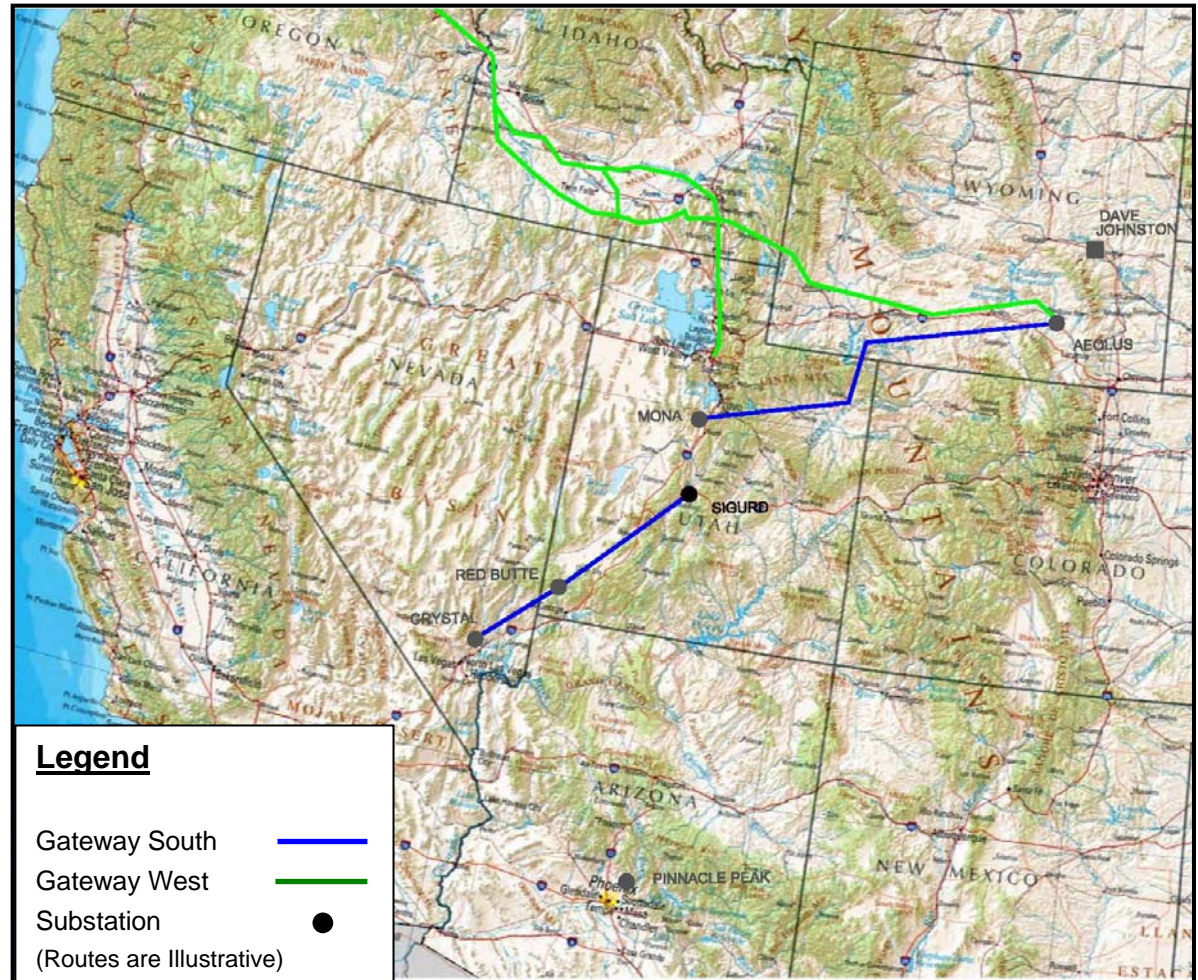
# Gateway South Reference Case

## Wyoming - Utah

- ◆ 3,000 MW
- ◆ 2 - 500kV AC
- ◆ 2014 in-service date

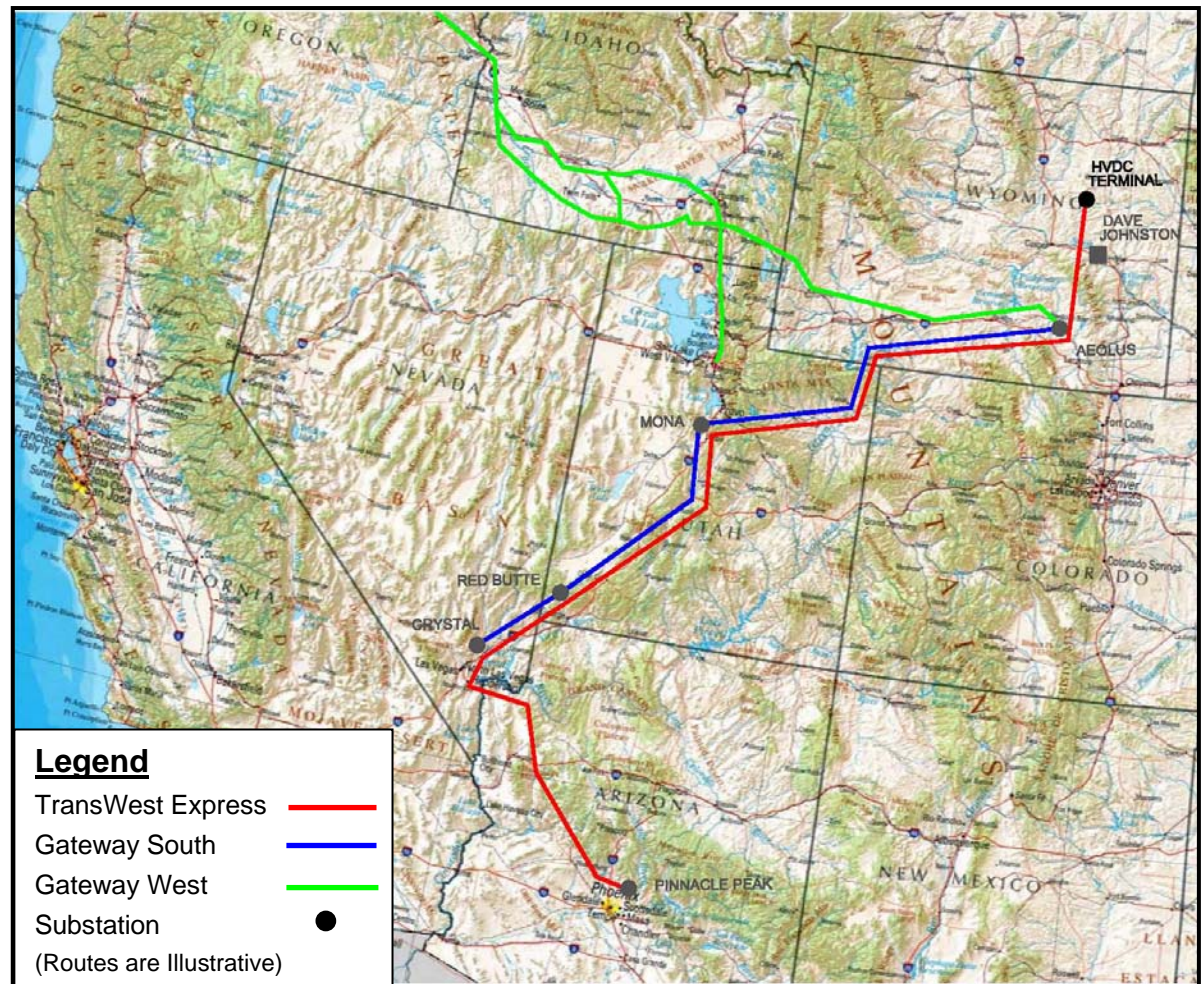
## Utah - Nevada

- ◆ 800 - 1500 MW
- ◆ 345 kV or 500 kV AC
- ◆ 2014 in-service Date



# TransWest Express and Gateway South Potential Design Solutions

- ◆ Size of combined projects dependent on regional and customer needs
- ◆ Capacity options are under review from 4,500 to 7,500 MW export from WY
- ◆ DC circuit options include 3<sup>rd</sup> terminal or termination in southern Nevada



# Gateway South and TransWest Express Projects - Needs Assumptions (MW)

## Central Utah (Sink)

Gateway South	TransWest Express	Reference	Low	High
1,500 – 3,000	0	1,500	1,500	1,500

## Wyoming (Source)

Gateway South	TransWest Express	Reference	Low	High
3,000	3,000	6,000	4,500	7,500

## SW Utah/Las Vegas (Sink)

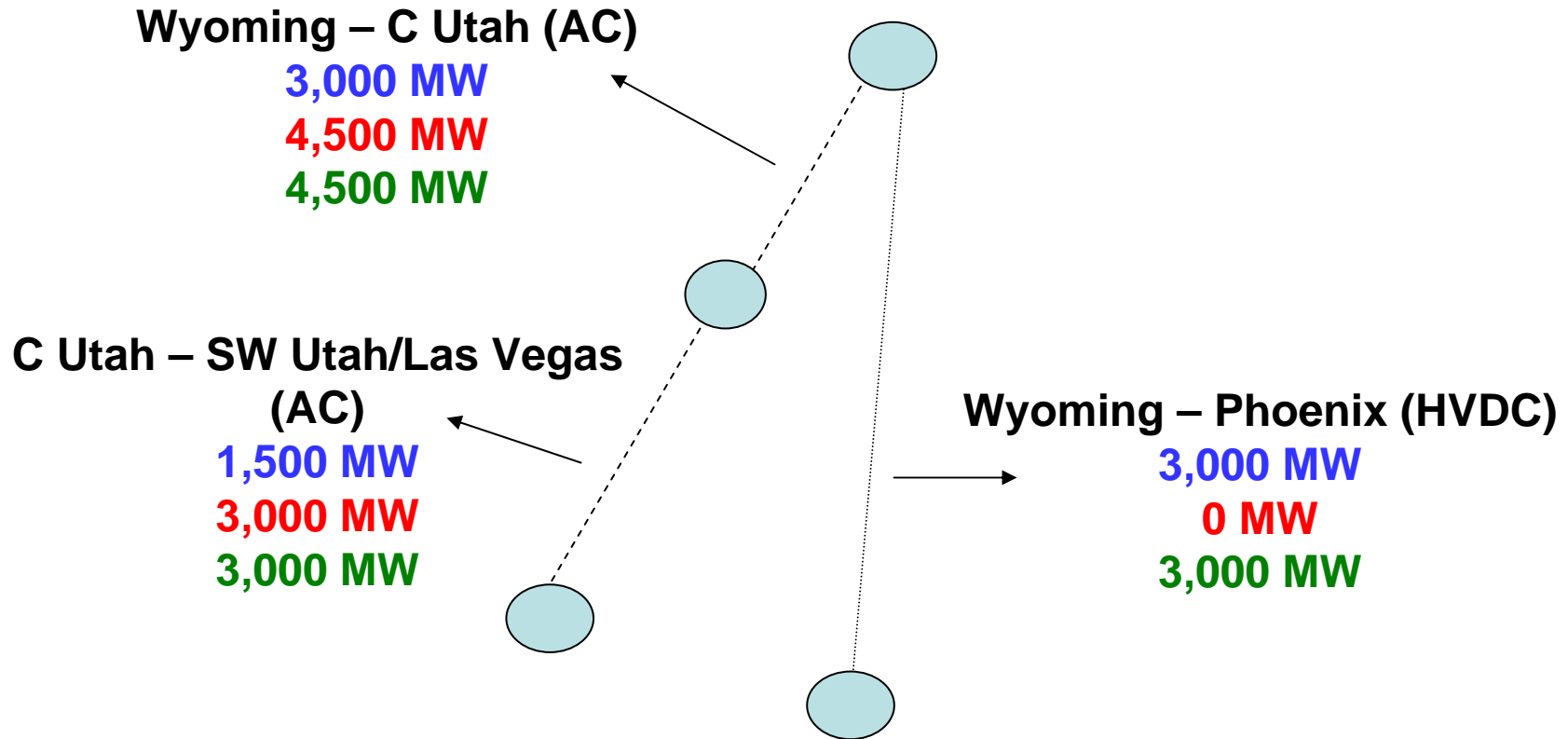
Gateway South	TransWest Express	Reference	Low	High
0 – 1,500	0	1,500	3,000	3,000

## Phoenix (Sink)

Gateway South	TransWest Express	Reference	Low	High
0	3,000	3,000	0	3,000



# Potential Design Solutions



## Key

Reference Case

Lower Case

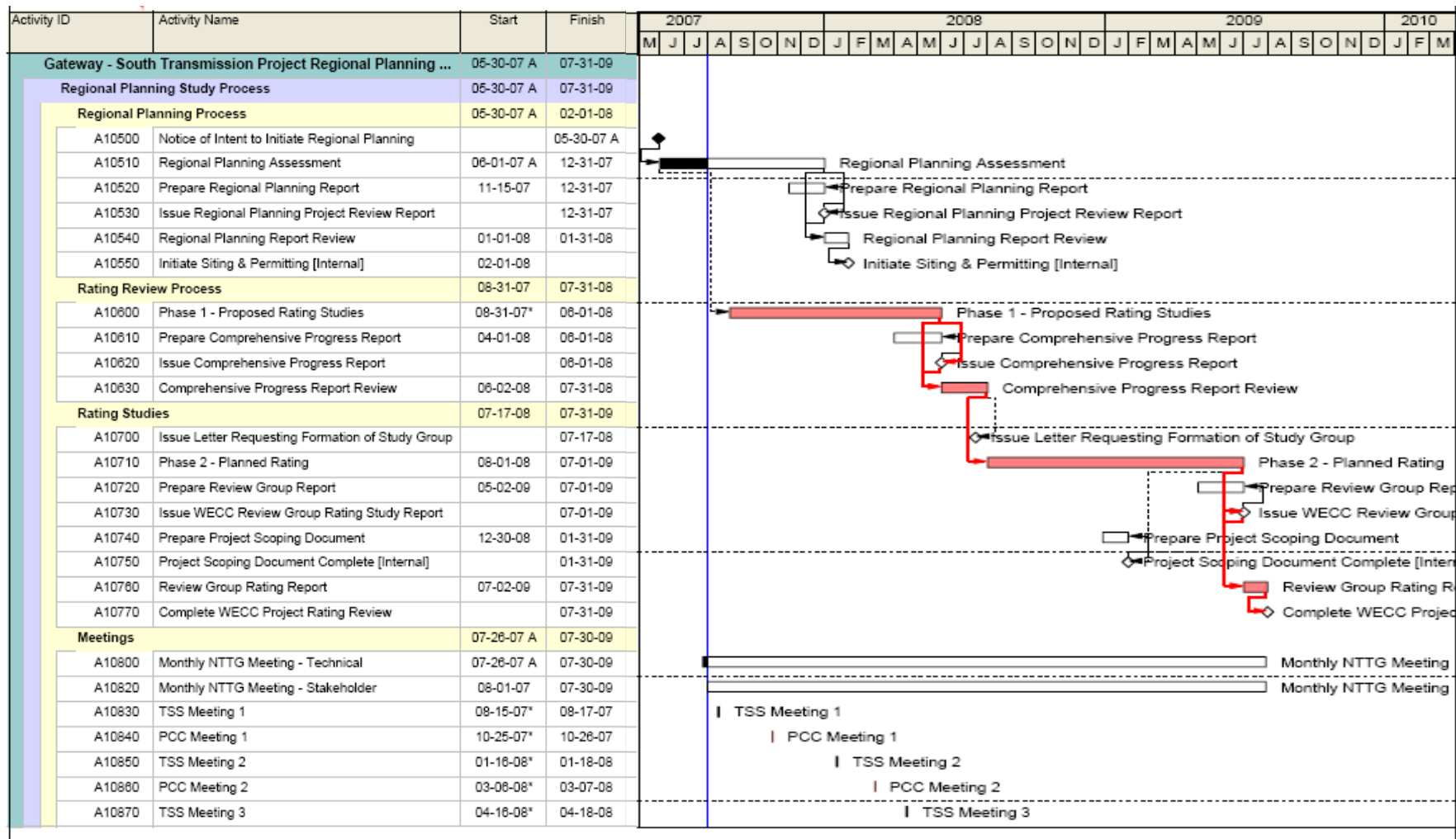
Upper Case

# **TransWest Express and Gateway South Complementary Projects**

---

- ◆ **Palo Verde - Devers #2 - 500kV line**
- ◆ **EOR 9300 Project**
- ◆ **Palo Verde - North Gila #2 - 500kV line**
- ◆ **Gateway West – 2-500kV line**
- ◆ **Mona – Terminal – 2-500kV line**
- ◆ **Populus – Terminal – 2-345kV line**

# WECC Review Timeline for Projects



# Stakeholder Forum

---

# Represented today by...

---

## **Arizona Public Service:**

Bob Smith, *Manager of Transmission Planning and Engineering*

Peter Krzykos, *Supervisor of Transmission Planning,*

[peter.krzykos@aps.com](mailto:peter.krzykos@aps.com)

## **PacifiCorp:**

Darrell Gerrard, *VP, Transmission Planning*

Craig Quist, *Manager of Transmission Development & Planning,*

[craig.quist@pacificorp.com](mailto:craig.quist@pacificorp.com)

## **National Grid:**

David Smith, *Project Manager, Business Development,*

[david.smith@us.ngrid.com](mailto:david.smith@us.ngrid.com)

## **Wyoming Infrastructure Authority:**

Loyd Drain, *Development Director,* [Loydd@WYIA.org](mailto:Loydd@WYIA.org)